



**Smithsonian Institution**

*Archives Center - NMAH*

## **Earl Shaffer's Appalachian Trail Hike Diary, 1998**

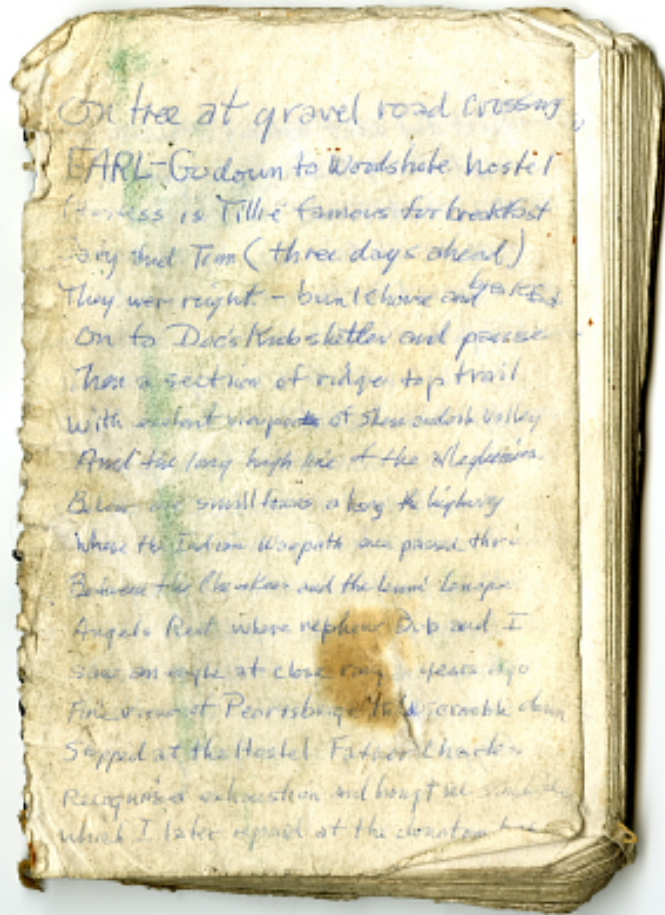
Extracted on Aug-20-2014 07:42:08

**The Smithsonian Institution continues to research information on its collections and is thankful to the digital volunteers who helped to transcribe this material. We look forward to using the work they created to further enrich our collections.**

- Before you incorporate this material into a for-profit publication or online project, please contact the Archives Center - NMAH;
- Please leave source and copyright information as is and avoid obscuring these details in the material;
- Do not post this document as a whole to a social media site, such as a blog, Facebook page, Twitter feed, etc;
- Researchers: if you deposit this material, please let Archives Center - NMAH know where the material is deposited so that we can guide the community members to it.

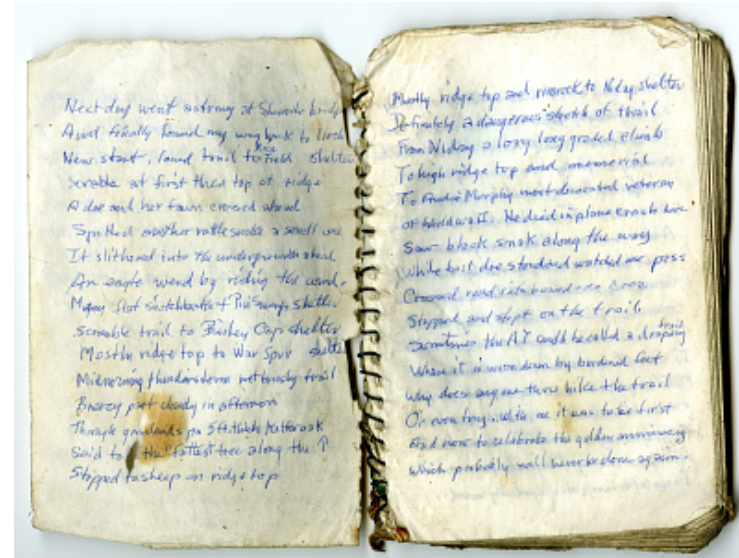
Contact the Smithsonian Institution for the current status of this project and related material. To see this project online - or other transcription projects - please visit [here](#).

On tree at gravel road crossing  
EARL-Go down to Woodshobe hostel  
Hostess is Tillie famous for breakfast  
Gary and Tim (three days ahead)  
They wer right - bunkhouse and [breakfast]  
On to Doc's [Knob] shelter and pause  
Then a section of ridge top trail  
with exclent viewpoi ~~ts~~ of Shenandoah  
Valley  
And the long high line of the [Alleghenie's]  
Below are small towns along the highway  
Where the Indian Warpath once passed thru  
Between the Cherokees and the [Lenni-Lenape]  
Angels Rest where nephew Bob and I  
saw an eagle at close rang years ago  
Fine view at Pearisburge, [then]scramble down  
Stopped at the Hostel Father Charles  
Recognized exhasstion and bought [me some[?]]  
Which I later repaid at the donation box [[page covers rest of text]]



Earl Shaffer's Appalachian Trail Hike Diary, 1998  
Transcribed and Reviewed by Digital Volunteers  
Extracted Aug-20-2014 07:42:08

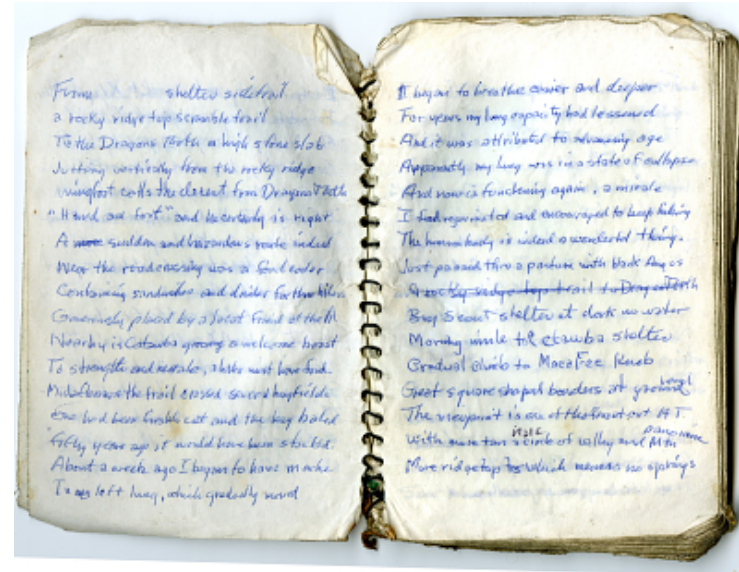
Next day went astray at [[Shimate bridge?]]  
 And finally found my way back to Iosie  
 New start. lowd trail to Rice Field shelter  
 sorable at first then top of ridge a doe and her fawn crossed ahead  
 Spotted another rattlesnake a small one  
 It slithered into the undergrowth ahead  
 An eagle wend by riding the wind.  
 Many flat switchbacks + Pin Swamp shelter  
 scramble trail to Baibey Cap shelter  
 Mostly ridge top to War Spur shelter  
 Midmorning thunderstorm wet brushy trail.  
 Breezy part cloudy in afternoon  
 Through grasslands pa 5ft. thick keffer oak  
 said to [[small hole in page]] the "fattest tree along the [[arrow pointing  
 up]]  
 stopped to sleep on ridge top  
 [[ end page]]  
 [[begin page]]  
 Mostly ridge top and rimrock to Niday shelter  
 Definitely a dangerous stretch of trail  
 From Niday a long long graded climb  
 To high ridge top and memorial  
 To Audie Murphy most decorated veteran  
 of World Wa II. He died in plane crash here  
 Saw black snak along the way  
 white tail doe stood and watched me pass  
 Crossed road into burned over area  
 Stopped and slept on the trail.  
 Sometimes the AT could be called a drapery trail  
 Where it is worn down by burdened feet  
 Why does anyone thru hike the trail  
 Or even try. With me it was to be first  
 And now to celebrate the golden anniversary  
 Which probably will never be done again.



Earl Shaffer's Appalachian Trail Hike Diary, 1998  
 Transcribed and Reviewed by Digital Volunteers  
 Extracted Aug-20-2014 07:42:08

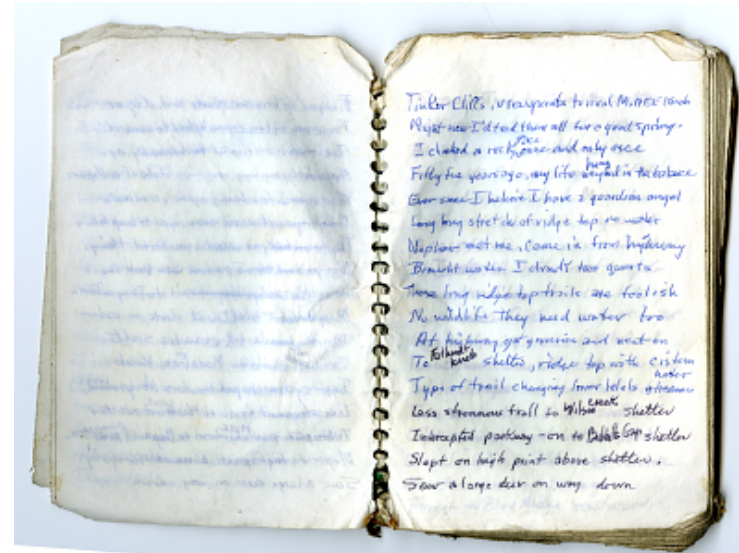
From ~~the~~ shelter sidetrail  
 a rocky ridge top scramble trail  
 To the Dragons Tooth a high stone slab  
 Jutting vertically from the rocky ridge  
 wingfoot calls the decent from Dragons Tooth  
 "Hand and Foot" and he certainly is right  
 A ~~more~~ sudden and hazardous route  
 indeed  
 Near the roadcrossing was a food cooler  
 Containing sandwiches and drinks for thru hikers  
 Generously placed by a local friend of the ~~the~~ Appalachian Trail symbol]]  
 Nearby is Catawba grocery a welcome boost  
 To strength and morale, a hiker must have food.  
 Mid-afternoon the trail crossed several hayfields  
 One had been fresh cut and the hay baled  
 fifty years ago it would have been stacked.  
 About a week ago I began to have an ache  
 In my left lung, which gradually moved  
 [[end page]]

[[begin page]]  
 I began to breathe easier and deeper  
 For years my lung capacity had lessened  
 And it was attributed to advancing age  
 Apparently my lung was in a state of collapse  
 And now is functioning again, a mirale  
 I feel rejuvenated and encouraged to keep hiking  
 The human body is indeed a wonderful thing.  
 Just passed thru a pasture with black Angus  
~~A rocky ridge top trail to Dragon Tooth~~  
 Boy Scout shelter at dark no water  
 Morning mile to Catawba shelter  
 Gradual climb to MacaFee Knob  
 Great square shaped boulders at ground <sup>level</sup>  
 The viewpoint is one of the finest on t AT.  
 with more tan <sup>one</sup> a circle of valley and Mtn <sup>panorama</sup>  
 More ridgetop to which means no springs



Earl Shaffer's Appalachian Trail Hike Diary, 1998  
 Transcribed and Reviewed by Digital Volunteers  
 Extracted Aug-20-2014 07:42:08

[[start page - page is blank]][[end page - page is blank]]  
 [[start page]] Tinker Cliffs, viewpoints to rival MoREE Knob  
 Right now I'd trade them all for a good spring  
 I climbed a rock <sup>face</sup> once and  
 only once  
 Fifty five years ago, my life weighed <sup>above weighed</sup> hung <sup>above weighed</sup>  
 weighed in the balance  
 Ever since I believe I have a guardian angel  
 Long long stretch of ridge top no water  
 Nephew met me, came in from highway  
 Brought water I drank two quarts  
 Those long ridge top trails are foolish  
 No wildlife They need water too  
 At highway got groceries and went on  
 to Fulhardt Knob shelter, ridge top with cistern water  
 Type of trail changing lower levels streams  
 Less strenuous trail to Wilson creek shelter  
 Intercepted parkway - on to Bobbetts Gap shelter  
 Slept on high point above shelter.  
 Saw a large deer on way down [[end page]]

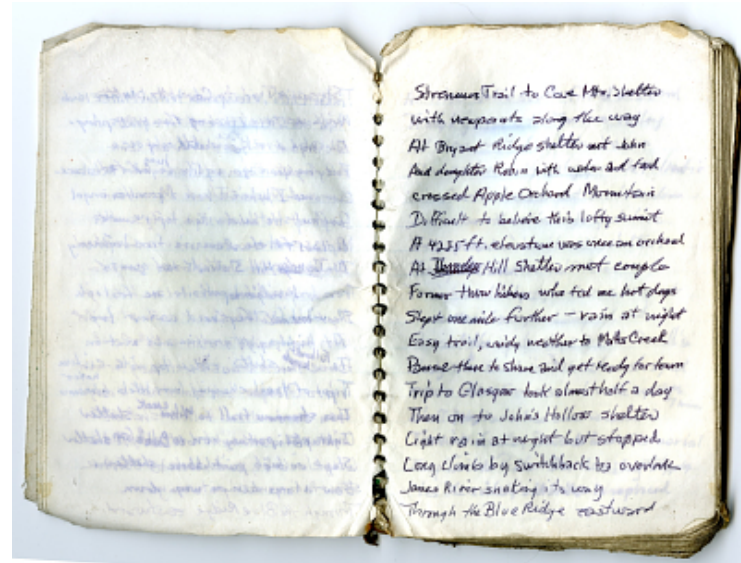


Earl Shaffer's Appalachian Trail Hike Diary, 1998  
 Transcribed and Reviewed by Digital Volunteers  
 Extracted Aug-20-2014 07:42:08

[[start page- blank page]]  
[[end page- blank page]]

[[start page]]

Strenuous Trail to Cove Mtn. Shelter  
with viewpoints along the way  
At Bryant Ridge shelter met John  
And daughter Robin with water and food  
crossed Apple Orchard Mountain  
Difficult to believe this lofty summit  
A 4225 ft. elevation was once an orchard  
At ~~Jonny's~~ Thunder Hill Shelter met  
couple  
Former thru hikers who fed me hot dogs  
Slept one mile further - rain at night  
Easy trail, windy weather to Matts Creek  
Pause there to shave and get ready for town  
Trip to Glasgow took almost half a day  
Then on to John's Hollow shelter  
Light rain at night but stopped  
Long climb by switchback to overlook  
James River snaking its way  
Through the Blue Ridge eastward  
[[end page]]



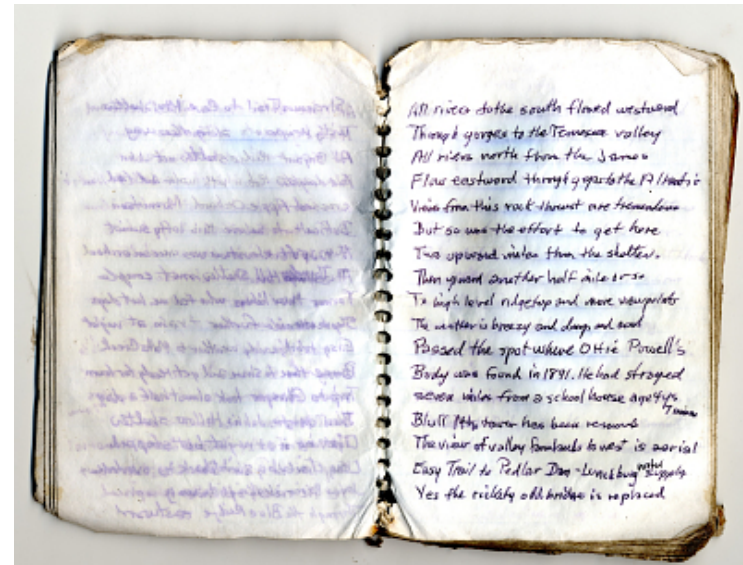
Earl Shaffer's Appalachian Trail Hike Diary, 1998  
Transcribed and Reviewed by Digital Volunteers  
Extracted Aug-20-2014 07:42:08

[[start page - blank page]]

[[end page- blank page]]

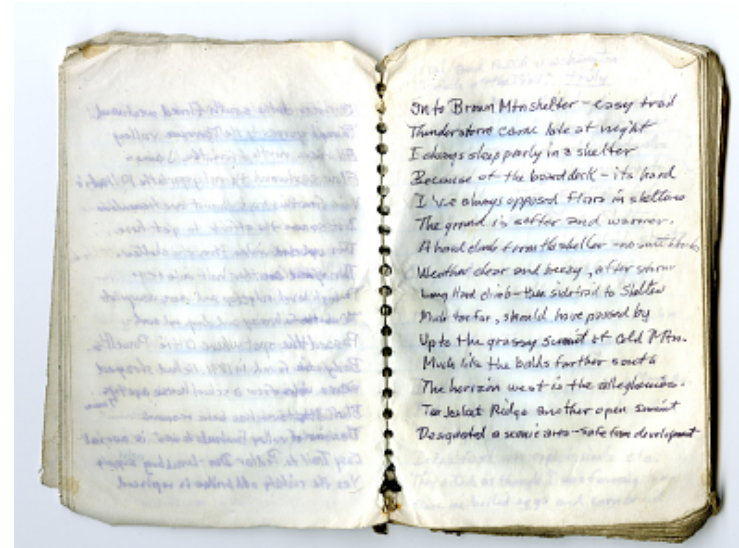
[[start page]]

All rivers to the south flowed westward  
Through gorges to the Tennessee valley  
All rivers north from the James  
Flow eastward through gaps to the Atlantic  
Views from this rock thrust are tremendous  
But so was the effort to get here  
Two upward miles from the shelter.  
Then upward another half mile or so  
To high level ridgetop and more viewpoints  
The weather is breezy and damp and cool  
Passed the spot where Otie Powell's  
Body was found in 1891. He had strayed  
seven miles from a school house age 4ys 7 mons  
Bluff Mtn tower has been removed  
The view of valley farmlands to west is aerial  
Easy Trail to Pedlar Dam - Lynchburg [^water] supply  
Yes the rickety old bridge is replaced  
[[end page]]



Earl Shaffer's Appalachian Trail Hike Diary, 1998  
Transcribed and Reviewed by Digital Volunteers  
Extracted Aug-20-2014 07:42:08

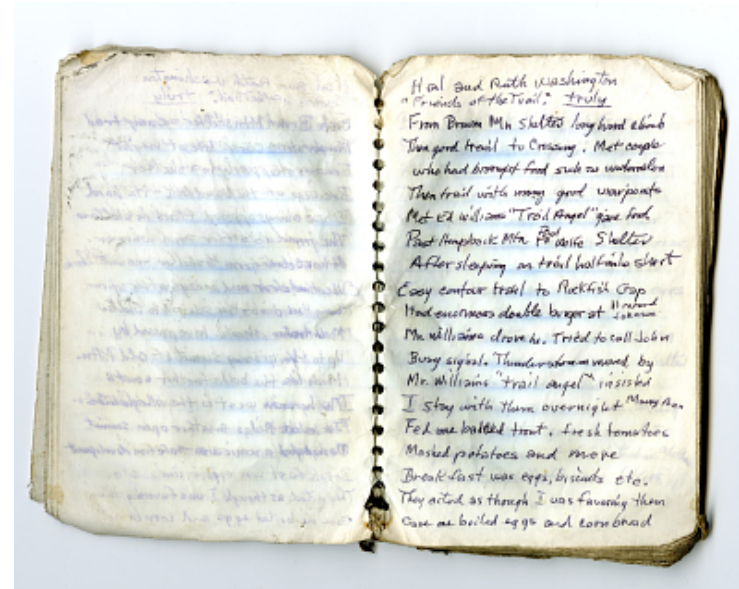
On to Brown Mtn shelter - easy trail Thunderstorm came late at night I always sleep poorly in a shelter Because of the board deck - its hard I've always opposed floors in shelters The ground is softer and warmer. A hard climb from the shelter - no switchbacks Weather clear and breezy, after storm Long Hard climb - then side trail to Shelter Much too far, should have passed by Up to the grassy summit of Cold Mtn. Much like the balds farther south The horizon west is the alleghenies. Tar Jacket Ridge another open summit Designated a scenic area - safe from development



Earl Shaffer's Appalachian Trail Hike Diary, 1998  
Transcribed and Reviewed by Digital Volunteers  
Extracted Aug-20-2014 07:42:08

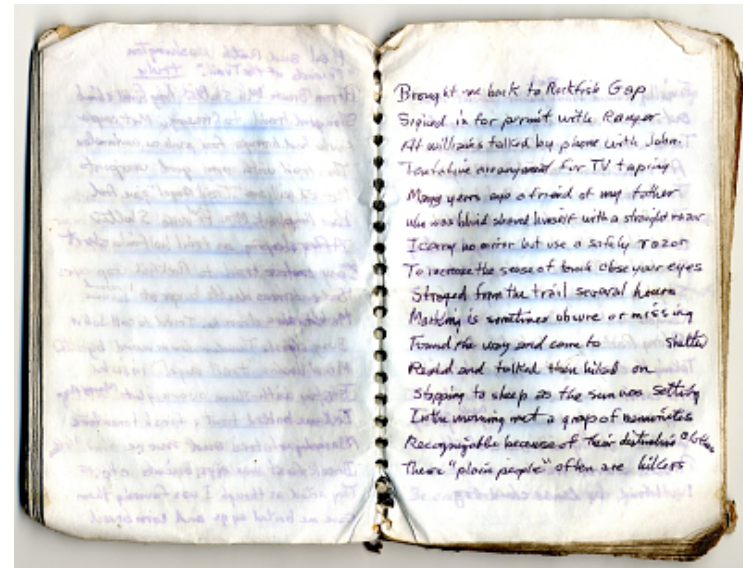


Hal and Ruth Washington "Friends of the Trail." truly From Brown Mtn Shelter long hard climb Then good trail to Crossing. Met couple who had brought food such as watermelon Then trail with many good viewpoints met Ed Williams "Trail Angel" gave food Past Humpback Mtn to Paul Wolfe Shelter After sleeping on trail half mile short Easy contour trail to Rockfish Gap Had enormous double burger at Howard Johnson Mr. Williams drove in. Tried to call John Busy Signal. Thunderstorm moved by Mr. Williams "trail angel" insisted I stay with them overnight. Mary Ann Fed me baked trout, fresh tomatoes Mashed potatoes and more Breakfast was eggs, biscuits etc. They acted as though I was favoring them Gave me boiled eggs and cornbread



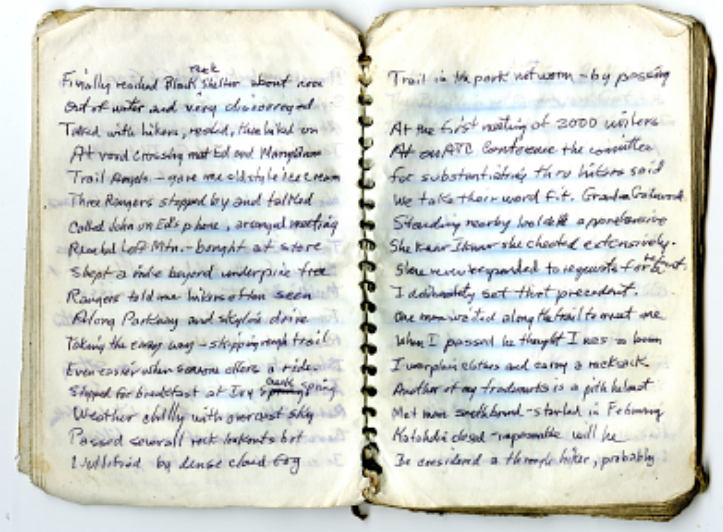
Earl Shaffer's Appalachian Trail Hike Diary, 1998  
Transcribed and Reviewed by Digital Volunteers  
Extracted Aug-20-2014 07:42:08

Brought me back to Rockfish Gap  
Signed in for permit with Ranger  
At William's talked by phone with John.  
Tentative arrangement for TV taping  
Many years ago a friend of my father  
who was blind shaved himself with a straight razor  
I carry no mirror but use a safety razor  
To increase the sense of touch close your eyes  
Strayed from the trail several hours  
Marking is sometimes obscure or missing  
Found the way and came to [[blank space]] shelter  
Rested and talked then hiked on  
stopping to sleep as the sun was setting  
In the morning met a group of mennonites  
Recognizable because of their distinctive clothes  
These "plain people" often are hikers



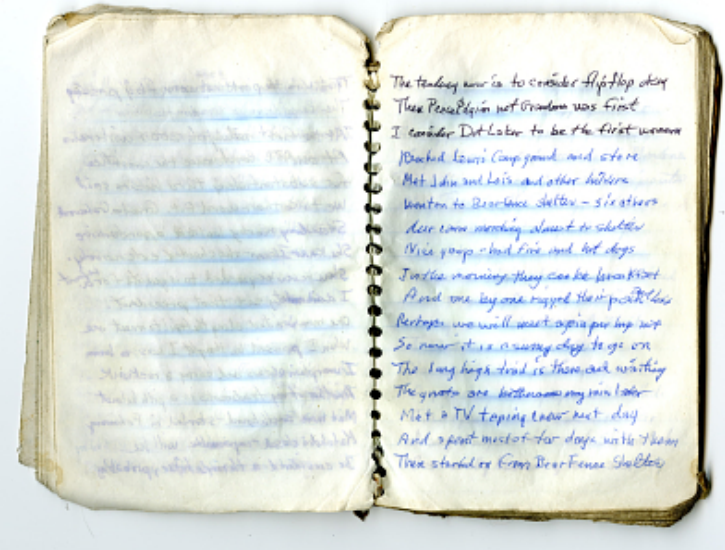
Earl Shaffer's Appalachian Trail Hike Diary, 1998  
Transcribed and Reviewed by Digital Volunteers  
Extracted Aug-20-2014 07:42:08

Finally reached Black <sup>rock</sup> Shelter about noon  
 Out of water and very discouraged  
 Talked with hikers, rested, then hiked on  
 At road crossing meet Ed and MaryAnn  
 Trail Angels - gave me old style ice cream  
 Three Rangers stopped by and talked  
 Called John on Ed's phone, arranged meeting  
 Reached Loft Mtn. - bought at store  
 Slept a mile beyond under pine tree  
 Rangers told me hikers often seen  
 Along Parkway and skyline drive  
 Taking the easy way - skipping rough trail  
 Even easier when someone offers a ride. Stopped for breakfast at Ivy  
~~Spring~~ ~~Spring~~ <sup>^</sup>[[Creek]] Spring  
 Weather chilly with overcast sky  
 Passed several rock lookouts but  
 Nullified by dense cloud fog  
 [[end page]]  
 [[start page]]  
 Trail in the park not worn - by passing  
 At the first meeting of 2000 writers  
 At an ATC Conference the committee  
 for substantiating thru hikers said  
 We take their word fit. Grandma Catewood  
 Standing nearby looked apprehensive  
 She know I know she cheated extensively.  
 She never responded to requests for a <sup>^</sup>[[report.]]  
 I deliberately set that precedent.  
 One man waited along the trail to meet me  
 When I passed he thought I was a bum  
 I wear plain clothes and carry a rucksack  
 Another of my trademarks is a pith helmet  
 Met man southbound - started in February  
 Katahdin closed - impassible will he  
 Be considered a through hiker, probably



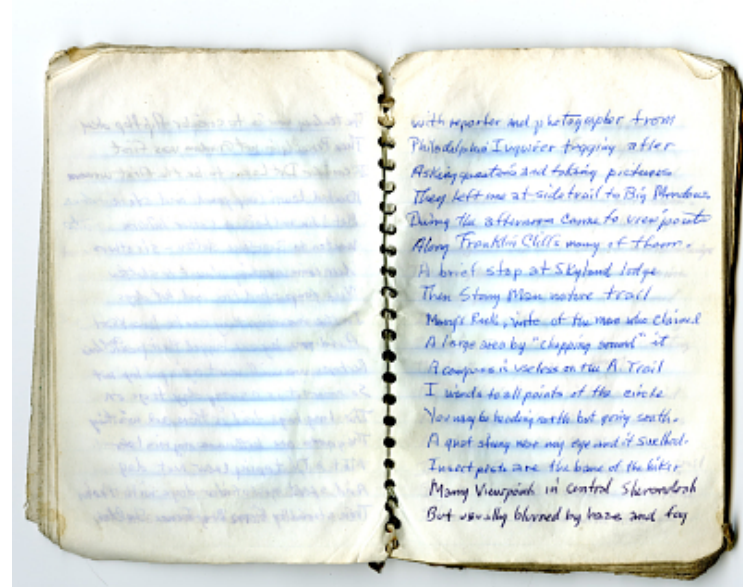
Earl Shaffer's Appalachian Trail Hike Diary, 1998  
 Transcribed and Reviewed by Digital Volunteers  
 Extracted Aug-20-2014 07:42:08

The tendency now is to consider flip flop okay Then Peace Pilgrim not Grandma was first I consider Dot Laker to be the first woman Reached Lewis Camp ground and store Met John and Lois and other hikers Went on to Bearfence shelter - six others deer came marching almost to shelter Nice group - had fire and hot dogs In the morning they cooked breakfast And one by one rigged their pack and left Perhaps we will meet again perhaps not So now it is a sunny day to go on The long high trail is there and waiting The gnats are bothersome may rain later Met a TV taping crew next day And spent most of few days with them Then started on from Bear Fence shelter



Earl Shaffer's Appalachian Trail Hike Diary, 1998  
Transcribed and Reviewed by Digital Volunteers  
Extracted Aug-20-2014 07:42:08

[[start page- blank page]] [[end page- blank page]]  
[[start page]]  
with reporter and photographer from  
Philadelphia Inquirer tagging after  
Asking questions and taking pictures  
They left me at side trail to Big Meadows  
During the afternoon came to viewpoints  
Along Franklin Cliffs many of them.  
A brief stop at Skyland lodge  
Then Stony Man nature trail  
Mary's Rock, wife of the man who claimed  
A large area by "chopping around" it  
A compass is useless on the A. Trail  
I winds to all points of the circle  
You may be heading north but going south.  
A gnat stung near my eye and it swelled.  
Insect pests are the bane of the hiker  
Many viewpoints in central Shenandoah  
But usually blurred by haze and fog [[end page]]

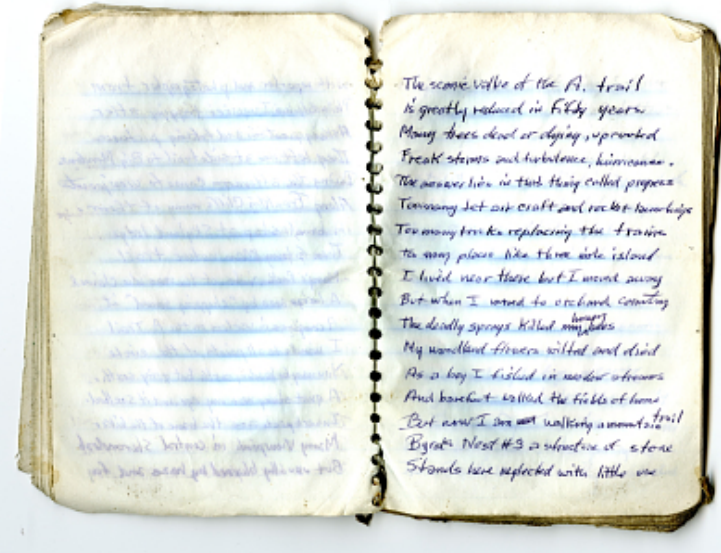


Earl Shaffer's Appalachian Trail Hike Diary, 1998  
Transcribed and Reviewed by Digital Volunteers  
Extracted Aug-20-2014 07:42:08

[[start page- blank page]] [[end page- blank page]]

[[start page]]

The scenic value of the A. trail  
is greatly reduced in fifty years.  
Many trees dead or dying, uprooted  
Freak storms and turbulence, hurricanes.  
The answer lies in this thing called progress  
Too many Jet aircraft and rocket launchings  
Too many trucks replacing the trains  
too many places like three mile island  
I lived near there but I moved away  
But when I moved to orchard country  
The deadly sprays killed my <sup>honey</sup> bees  
My woodland flowers wilted and died  
As a boy I fished in meadow streams  
And barefoot walked the fields of home  
But now I am walking a mountain <sup>trail</sup>  
Byrds Nest #3 a structure of stone  
Stands here neglected with little use  
[[end page]]

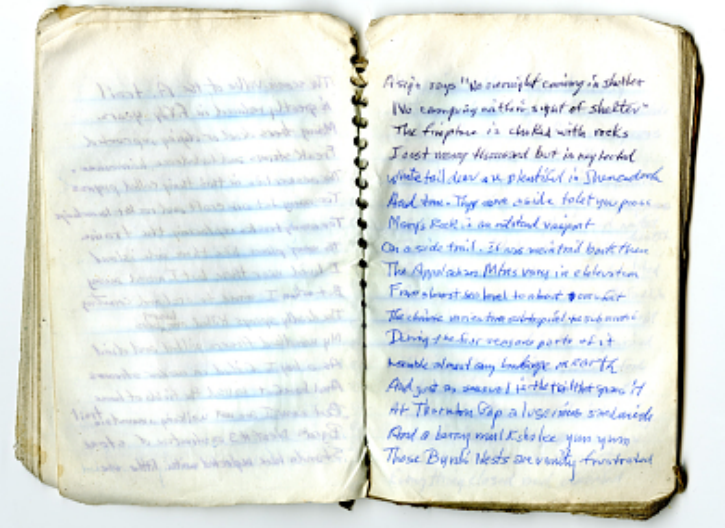


Earl Shaffer's Appalachian Trail Hike Diary, 1998  
Transcribed and Reviewed by Digital Volunteers  
Extracted Aug-20-2014 07:42:08

[[start page- blank page]] [[end page-blank page]]

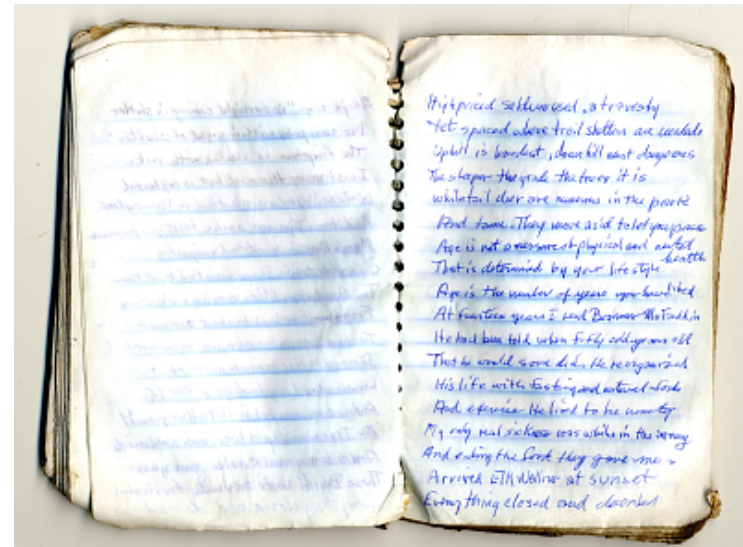
[[start page]]

A sign says "No overnight coming in shelter  
No camping within sight of shelter"  
The fireplace is choked with rocks  
I cost many thousand but is neglected  
Whitetail deer are plentiful in Shenandoches  
And tame. They move aside to let you pass  
Mary's Rock is an outstand viewpoint  
On a side trail. It was maintrail back then  
The Appalachian Mtns vary in elevation  
From almost sea level to almost 70050 feet  
The climate varies from subtropical to subarctic  
During the four seasons parts of it  
resemble almost any landscape on earth  
And just as unusual is the trail that spans it  
At Thornton Gap a luscious sandwich  
And a berry mulkshake yum yum  
Those Byrd's Nests are vanity frustrated  
[[end page]]



Earl Shaffer's Appalachian Trail Hike Diary, 1998  
Transcribed and Reviewed by Digital Volunteers  
Extracted Aug-20-2014 07:42:08

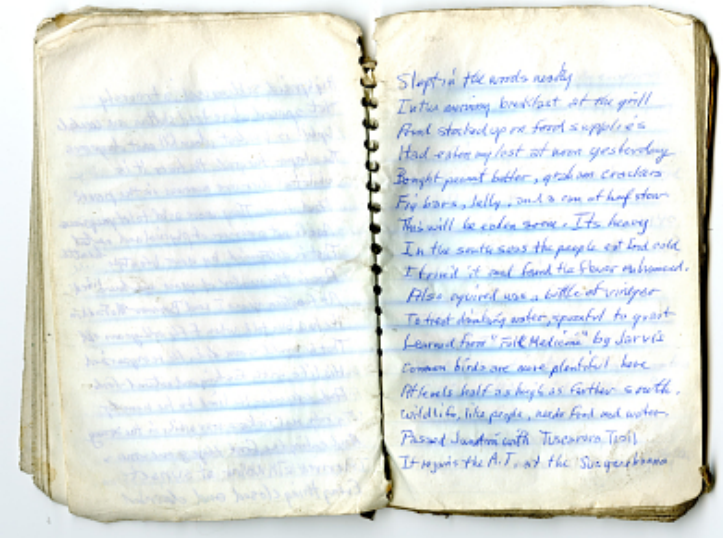
High priced seldom used, a travesty  
Yet spaced where trail shelters are needed  
Uphill is hardest, downhill most dangerous  
The steeper the grade the troeg it is  
whitetail deer are numerous in the park  
And tame. They move asid to let you pass  
Age is not a measure of physical and mental health  
That is determined by your lifestyle  
Age is the number of years you have lived  
At fourteen years I read Berman McFaddin  
He had been told when fifty odd years old  
That he would soon die. He reorganized  
His life with fasting and natural foods  
And exercise He lived to be ninety  
My only real sickness was while in the army  
And eating the food they gave me.  
Arrived Elk Wallow at sunset  
Everything closed and deserted



Earl Shaffer's Appalachian Trail Hike Diary, 1998  
Transcribed and Reviewed by Digital Volunteers  
Extracted Aug-20-2014 07:42:08

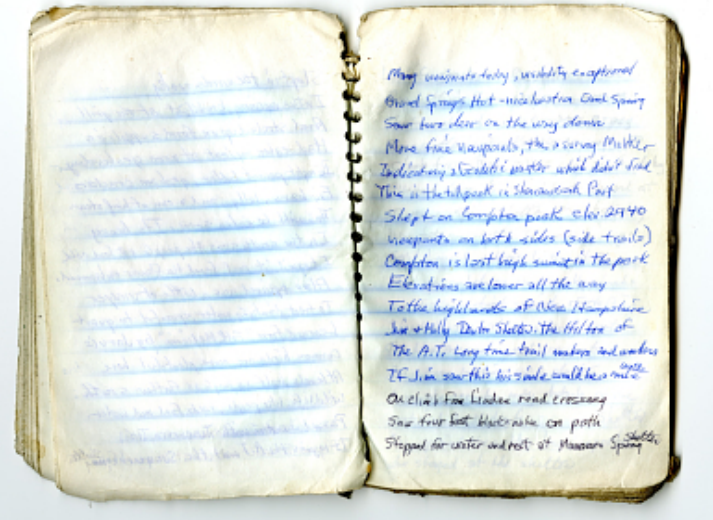


Slept in the woods nearby  
In the morning breakfast at the grill  
And stocked up on food supplies  
Had eaten my last at noon yesterday  
Bought peanut butter, graham crackers  
Fig bars, Jelly, and a can of beef stew. This will be eaten soon. Its heavy  
In the south seas the people eat food cold.  
I tried it and found the flavor enhanced.  
Also aquired was a bottle of vinegar  
To treat drinking water, spoonful to quart  
Learned from "Folk Medicine" by Jarvis  
Common birds are more plentiful here  
At levels half as high as farther south.  
Wildlife, like people, needs food and water.  
Passed Junction with Tuscarora Trail  
It rejoins the A.T. at the Susquehanna



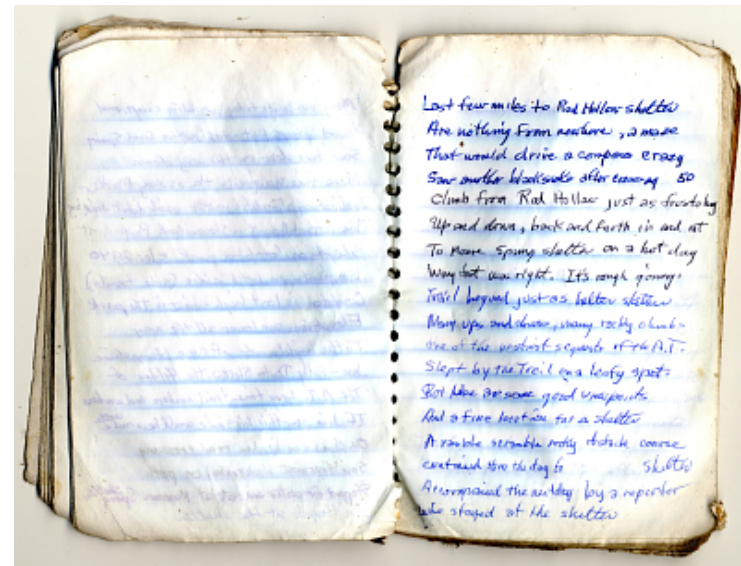
Earl Shaffer's Appalachian Trail Hike Diary, 1998  
Transcribed and Reviewed by Digital Volunteers  
Extracted Aug-20-2014 07:42:08

Many viewpoints today, visibility exceptional  
Gravel Springs Hut - nice location Good Spring  
Saw two deer on the way down  
More fine viewpoints, the a survey marker  
Indicating a Geodetic marker which didn't find  
This is the tall peak in Shenandoah Part  
Slept on Compton peak elev. 2940  
viewpoints on both sides (side trails)  
Compton is last high summit in the park  
Elevations are lower all the way  
To the highlands of New Hampshire  
Jim & Molly Denton Shelter. The Hilton of  
The A.T. Long time trail markers and workers  
If Jim saw this his smile would be a mile wide  
On climb from Linden road crossing  
Saw four foot black snake on path  
Stopped for water and rest at Manasses Spring shelter



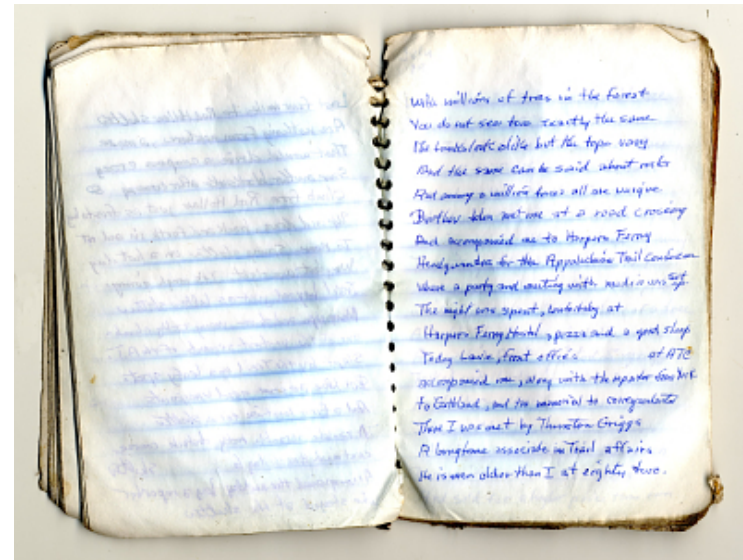
Earl Shaffer's Appalachian Trail Hike Diary, 1998  
Transcribed and Reviewed by Digital Volunteers  
Extracted Aug-20-2014 07:42:08

Last few miles to Rod Hollow shelter  
Are nothing from nowhere, a maze  
that would drive a compass crazy  
Saw another blacksnake after crossing 50  
climb from Rod Hollow just as frustrating  
Up and down, back and forth in and out  
to Moore Spring shelter on a hot day  
Wing foot was right. It's rough going.  
Trail beyond just as helter skelter  
Many ups and downs, many rocky climbs  
one of the nastiest segments of the A.T  
Slept by the Trail on a leafy spot.  
But here are some good viewpoints  
And a fine location for a shelter  
A ramble scramble rocky obstacle course  
continued thru the day to [[blank space]] shelter  
Accompanied the next day by a reporter  
who stayed at the shelter



Earl Shaffer's Appalachian Trail Hike Diary, 1998  
Transcribed and Reviewed by Digital Volunteers  
Extracted Aug-20-2014 07:42:08

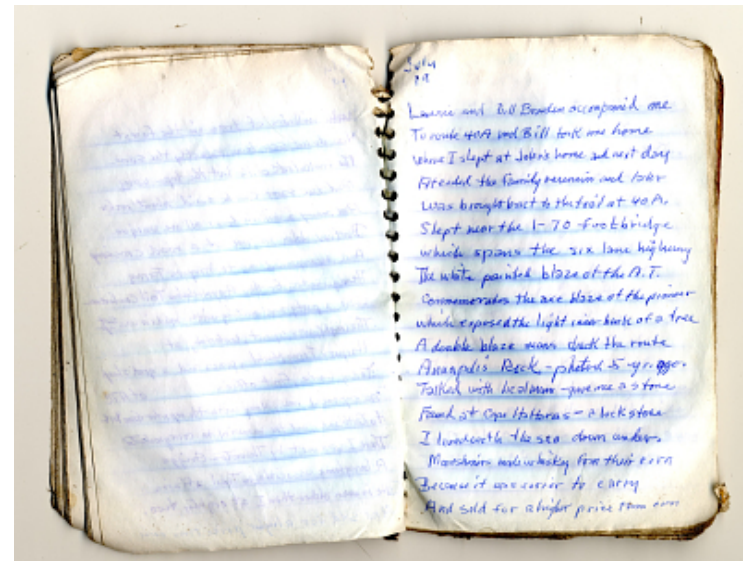
with millions of trees in the forest  
you do not see two exactly the same  
The trunks look alike but the tops vary  
and the same can be said about rocks  
And among a million faces all are unique  
Brother John met me at a road crossing  
and accompanied me to Harpers Ferry  
Headquarters for the Appalachian Trail Conference  
where a party and meeting with media was set up.  
The night was spent, comfortably at  
Harpers Ferry Hostel, pizza and a good sleep  
Today Laurie, front office's [ ] of ATC  
accompanied me, along with the reporter from York  
to Gathland, and the memorial to correspondents  
There I was met by Thurston Griggs  
A longtime associate in Trail affairs  
He is even older than I at eighty two.



Earl Shaffer's Appalachian Trail Hike Diary, 1998  
Transcribed and Reviewed by Digital Volunteers  
Extracted Aug-20-2014 07:42:08

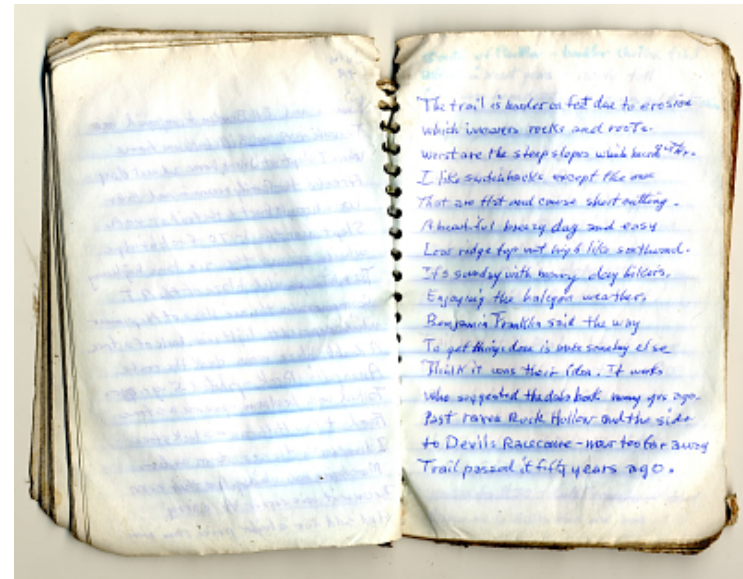
July 19

Laurie and Bill Bowden accompanied me to route 40A and Bill took me home where I slept at John's home and next day attended the family reunion and later was brought back to the trail at 40A, slept near the I-70 footbridge which spans the six lane highway. The white painted blaze of the A.T. commemorates the axe blaze of the pioneer which exposed the light inner bark of a tree. A double blaze means check the route. Annapolis Rock - photo'd 5 yr. ago. Talked with local man - gave me a stone found at Cape Hattaras - a luck stone. I lived with the sea down under. Moonshiners made whiskey from their corn because it was easier to carry and sold for a higher price than corn.



Earl Shaffer's Appalachian Trail Hike Diary, 1998  
Transcribed and Reviewed by Digital Volunteers  
Extracted Aug-20-2014 07:42:08

The trail is harder on feet due to erosion  
which uncovers rocks and roots.  
Worst are the steep slopes which become gutter.  
I like switchbacks except the ones  
that are flat and cause shortcutting.  
A beautiful breezy day and easy  
low ridge top not high like southward.  
It's Sunday with many day hikers.  
Enjoying the halcyon weather.  
Benjamin Franklin said the way  
to get things done is make somebody else  
think it was their idea. It works  
Who suggested the databook many yrs ago.  
Past raven Rock Hollow and the side  
to Devil's Racecourse - now too far away  
Trail passed it fifty years ago.



Earl Shaffer's Appalachian Trail Hike Diary, 1998  
Transcribed and Reviewed by Digital Volunteers  
Extracted Aug-20-2014 07:42:08

[[start page]] blank [[end page]]

[[start page]] South of PenMar - boulder choked trail added in recent years - nasty fall  
Could have been disastrous bruises and contusions  
slept just short of Pen Mar near the famous Mason Dixon Line  
At Pen Mar Park the Ranger took us to a stor to replenish food supplies.  
Went on past Deer Lick shelters stopped to talk with three hikers then pas Anlieton[[?]] shelter to Tumbling Run  
And stopped there for the night.

Trail nort of PenMar has lots of signs destination and mileage - stores and POs

Almost totally lacking farther south.

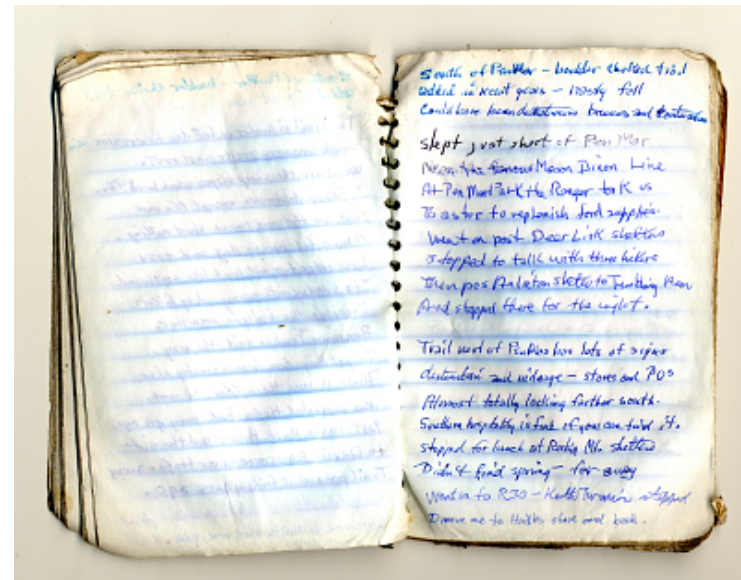
Southern hospitality is fine if you can find it.

stopped for lunch at Rocky Mt. shelters

Didn't find spring - far away

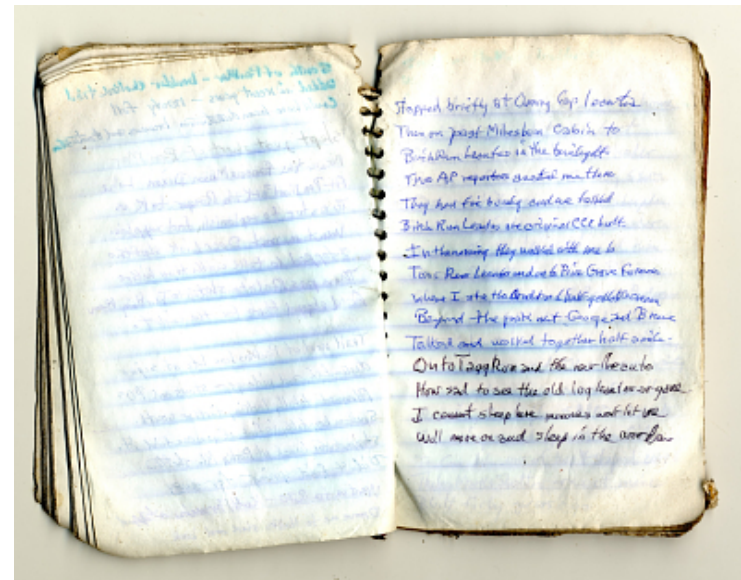
Went on to R30 - Keith Turanis[[?]] stopped

Drove me to Hinkles [[?]] store and back [[end page]]



Earl Shaffer's Appalachian Trail Hike Diary, 1998  
Transcribed and Reviewed by Digital Volunteers  
Extracted Aug-20-2014 07:42:08

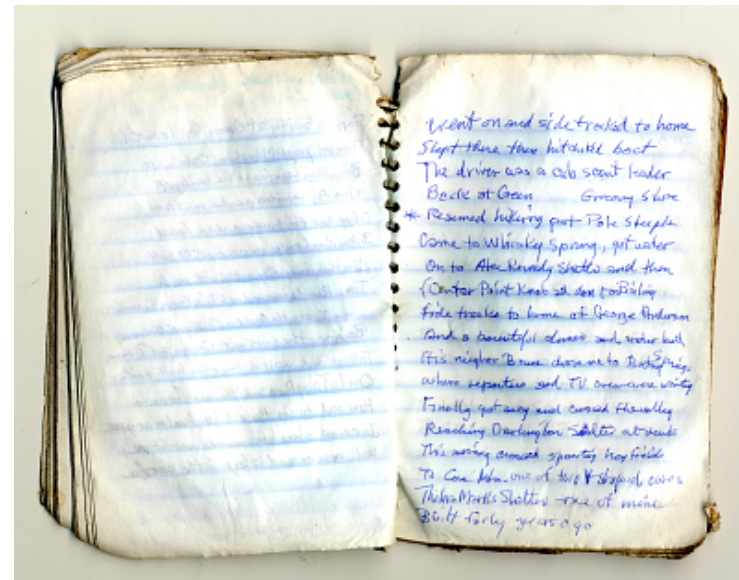
stopped briefly at Quarry Gap leantos  
Then on past Milesburn cabin to  
Birch Run leantos in the twilight.  
Two AP reporters awaited me there  
They had fire burning and we talked  
Birch Run Leantos are original CCC built.  
In the morning they walked with me to  
Toms Rim Leantos and on to Pine Grove Furnace  
where I ate the traditional half gallon [[^ice]] cream  
Beyond the park met George and Bruce  
talked and walked together half a mile.  
On to Tagg Run and the new leanto [[?]]  
How sad to see the old log leantos are gone  
I cannot sleep here memories wont let me  
Will move on and sleep in the woods.



Earl Shaffer's Appalachian Trail Hike Diary, 1998  
Transcribed and Reviewed by Digital Volunteers  
Extracted Aug-20-2014 07:42:08

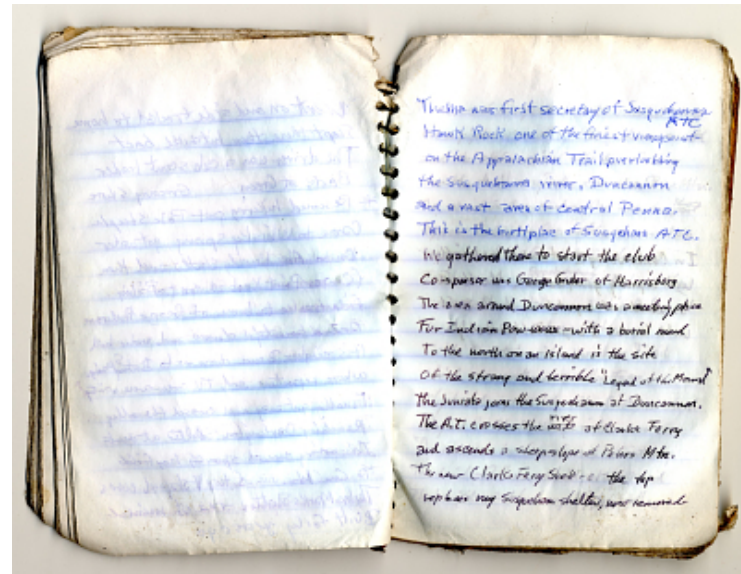


went on and side tracked to home slept there then hitchhiked back The driver was a cub scout leader back at Green Grocery Store \*Resumed hiking past Pole steeple came to Whisky Spring, got water on to Aleekenedy Shelter and then {Center Point Knob ad don to Boiling [[Fride]] tracks to home of George Anderson And a bountiful dinner and water bell His neighbor Bruce drove me to Bartny Springs where reporters and TV crew were waiting Finally got away and crossed the valley Reaching Dartington Shelter at dark This morning crossed sporting hey fields to Cove Mtn. one of two V-shaped coves Thelma Marks Shelter-one of mine Built forty years ago.



Earl Shaffer's Appalachian Trail Hike Diary, 1998  
Transcribed and Reviewed by Digital Volunteers  
Extracted Aug-20-2014 07:42:08

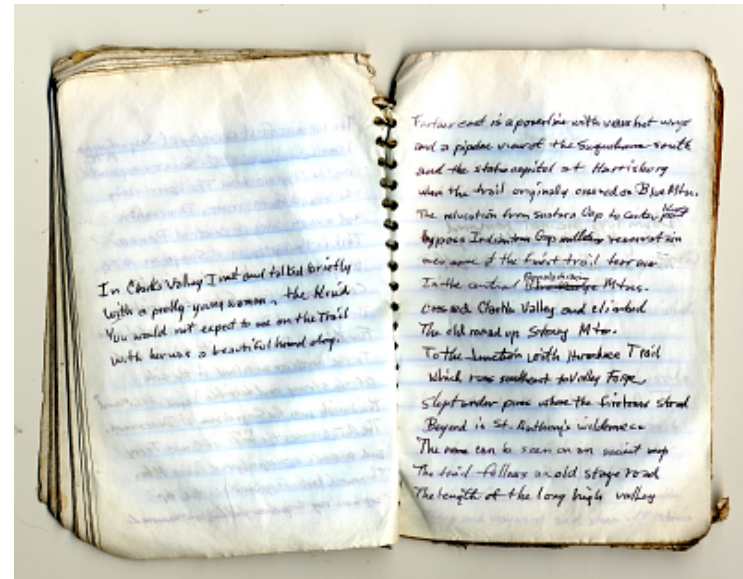
Thema was first secretary of Susquehanna ATC Hawk Rock one of the finest viewpoints on the Appalachian Trail, overlooking the Susquehanna river, Duncannon and a vast area of central Penna. This is the birthplace of Susquehanna ATC. We gathered there to start the club co-sponsor was George Gruber of Harrisburg The area around Duncannon was a meeting place for Indian Pow-wows- with a burial mound To the north on an island is the site of the strang and terrible "Legend of the Mound" The Juniata joins the Susquehanna at Duncannon. The A.T. crosses the ~~wide~~ river at Clark's Ferry and ascends a steep slope at Peters Mtn. The new Clarks Ferry Shelter on the top replaces my Susquehanna shelter, now removed.



Earl Shaffer's Appalachian Trail Hike Diary, 1998  
Transcribed and Reviewed by Digital Volunteers  
Extracted Aug-20-2014 07:42:08

In Clarks Valley I met and talked briefly  
with a pretty young woman, the kind  
You would not expect to see on the trail  
With her was a beautiful hound dog.  
[[end page]]

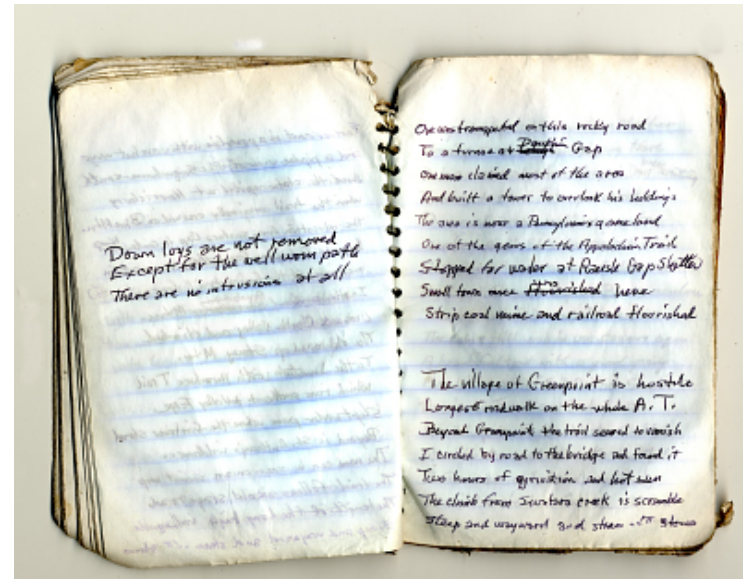
[[start page]]  
Farther east is a powerline with views bot ways  
and a pipeline view of the Suquehanna south  
and the state capitol at Harrisburg  
where the trail originally crossed on Blue Mtn.  
the relocation from swatara Gap to center K[[?]] point  
bypass Indiantown Gap military reservation  
over some of the finest trail terrain  
In the central ~~Blue Ridge~~ Appalachian  
Mtns.  
crossed Clarks Valley and climbed  
The old road up Stoney Mtn.  
To the Junction with Horseshoe Trail  
Which runs southeast to Valley Forge.  
Slept under pines where the firetower stood  
Beyond is St. Anthony's wilderness  
The name can be seen on an ancient map  
The trail follows an old stage road  
The length of the long high valley



Earl Shaffer's Appalachian Trail Hike Diary, 1998  
Transcribed and Reviewed by Digital Volunteers  
Extracted Aug-20-2014 07:42:08

Down logs are not removed  
Except for the well worn path  
There are no intrusions at all  
[[end page]]  
[[begin page]]  
Ore was transported on this rocky road  
To a [[fumar at Pauphin?]] Gap  
One man claimed most of the area  
And built a tower to overlook his holding's  
The area is now a Pennsylvania [[ameland?]]  
One of the gems of the Appalechain Trail.  
Stopped for water at Raush Gap Shelter  
Small town once ~~flourished~~ was here  
Strip coal mine and railroad flourished

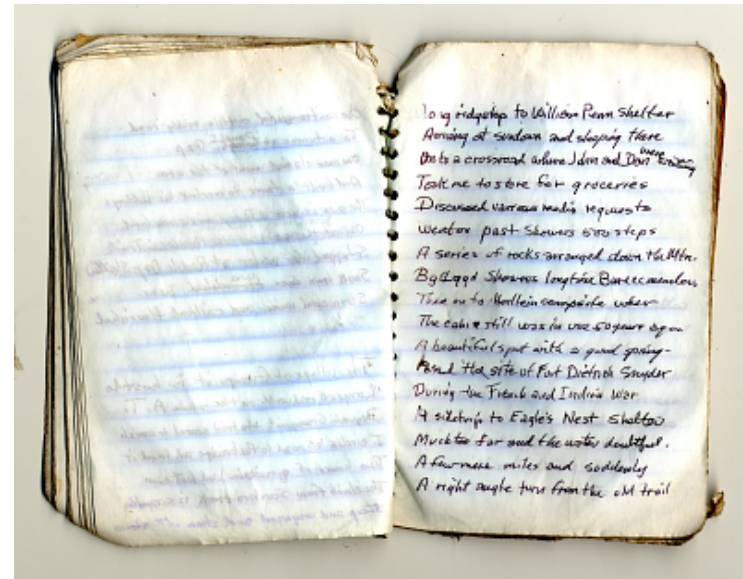
The village of Greenpoint is hostile  
Longest roadwalk on the whole A.T.  
Beyond Greenpoint the trail seemed to vanish  
I circled by road to the bridge and found it  
Two hours of agrivation and hot sun  
The climb from Swatara creek is scramble  
Steep and wayward and stream ~~with?~~ stones



Earl Shaffer's Appalachian Trail Hike Diary, 1998  
Transcribed and Reviewed by Digital Volunteers  
Extracted Aug-20-2014 07:42:08

[[start page - page is blank]][[end page - page is blank]]

[[start page]]long ridgetop to William Penn shelter  
Arriving at sundown and sleeping there  
On to a crossroad where John and Dan were waiting  
Took me to store for groceries  
Discussed various media requests  
Went on past Showers 500 steps  
A series of rocks arranged down the Mtn.  
By [[CLggd?]] Showers longtime [[Bum?]]CCC members  
Then on to the Herlein campsite wher  
The cabin still was in use 50 years ago  
A beautiful spot with a good spring-  
Passed the site of Fort Dietrich Snyder  
A sidetrip to Eagle's Nest Shelter  
Much too far and the water doubtful.  
A few more miles and suddenly  
A right angle turn from the old trail  
[[end page]]



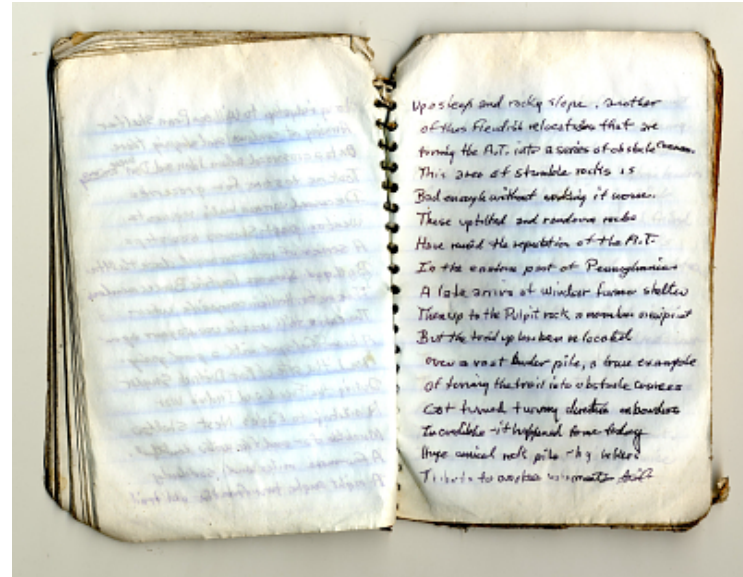
Earl Shaffer's Appalachian Trail Hike Diary, 1998  
Transcribed and Reviewed by Digital Volunteers  
Extracted Aug-20-2014 07:42:08

[[blank page]]

[[end page]]

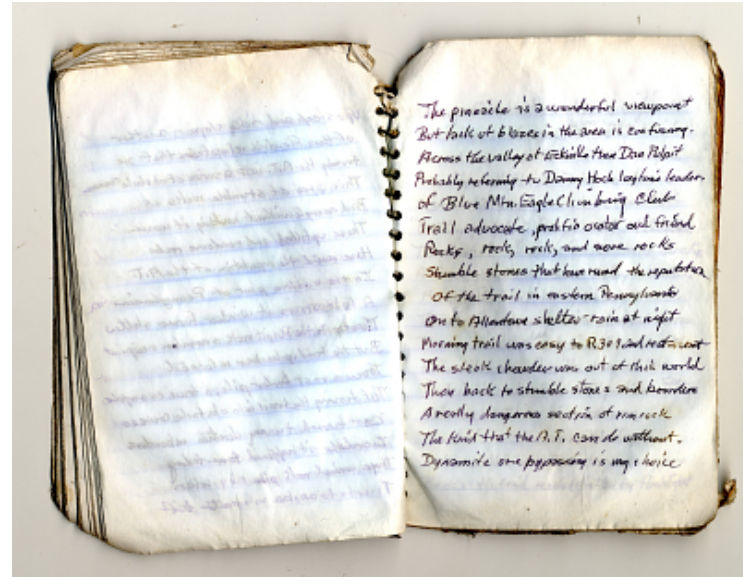
[[start page]]

Up a steep and rocky slope, another  
of those fiendish relocations that are  
turning the A.T. into a series of obstacle courses.  
This area of stumble rocks is  
Bad enough without making it worse.  
These up-tilted and [[randonom?]] rocks  
Have ruined the reputation of the A.T.  
In the eastern part of Pennsylvania.  
A late arrival at Windsor furnace shelter  
Then up to the Pulpit rock a marvelous viewpoint  
But the trail up has been relocated  
over a vast border pile, a true example  
of turning the trail into obstacle courses  
Got turned + wrong direction on borders  
Incredible - it happened to me today  
Huge conical rock pile - by hikers  
Tribute to workers who maintain trail.



Earl Shaffer's Appalachian Trail Hike Diary, 1998  
Transcribed and Reviewed by Digital Volunteers  
Extracted Aug-20-2014 07:42:08

[[start page - page is blank]][[end page - page is blank]]  
[[start page]] The pinnacle is a wonderful viewpoint  
But lack of blazes in the area is confusing.  
Across the valley at Eckville then Dan Pulpit  
Probably referring to Danny Hoch longtime leader  
of Blue Mtn. Eagle Climbing Club  
Trail advocate, prolific orator and friend  
Rocks, rock, rock and more rocks  
Stumble stones that have ruined the reputation  
of the trail in eastern Pennsylvania  
on to Allentown shelter - rain at night  
Morning trail was easy to R309 and restaurant  
The steak chowder was out of this world  
Then back to stumble stones and borders  
A really dangerous section of rim rock  
The kind that the A.T. can do without  
Dynamite ore bypassing is my choice [[end page]]



Earl Shaffer's Appalachian Trail Hike Diary, 1998  
Transcribed and Reviewed by Digital Volunteers  
Extracted Aug-20-2014 07:42:08

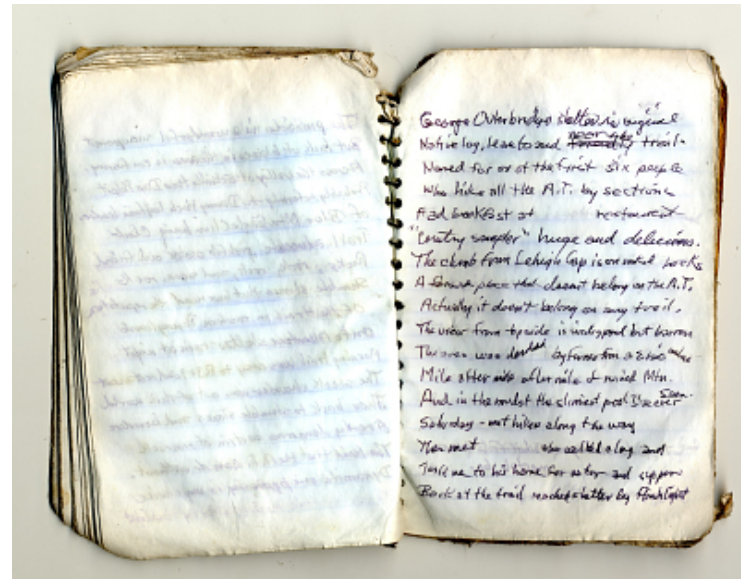
George Outerbridge shelter is original  
Native log, lean to and ~~friendly~~ near the  
trail.

Named for one of the first six people  
who hike all the A.T. by sections  
Had breakfast at ~~restaurant~~  
"Country sampler" huge and delicious.

The climb from Lehigh Gap is on craked rocks  
A fearsome place that doesnt belong on the A.T.  
Actually it doesn't belong on any trail.

The view from topside is widespread but barren  
The area was desolated by fumes from a Elio~~?~~ mine  
Mile after mile after mile of ruined Mtn.

And in the midst the slimiest pool I've ever seen.  
Saturday -met hikers along the way  
Then met ~~who~~ who walked along and  
Took me to his home for water and supper  
Back at the trail reached shelter by flashlight



Earl Shaffer's Appalachian Trail Hike Diary, 1998  
Transcribed and Reviewed by Digital Volunteers  
Extracted Aug-20-2014 07:42:08

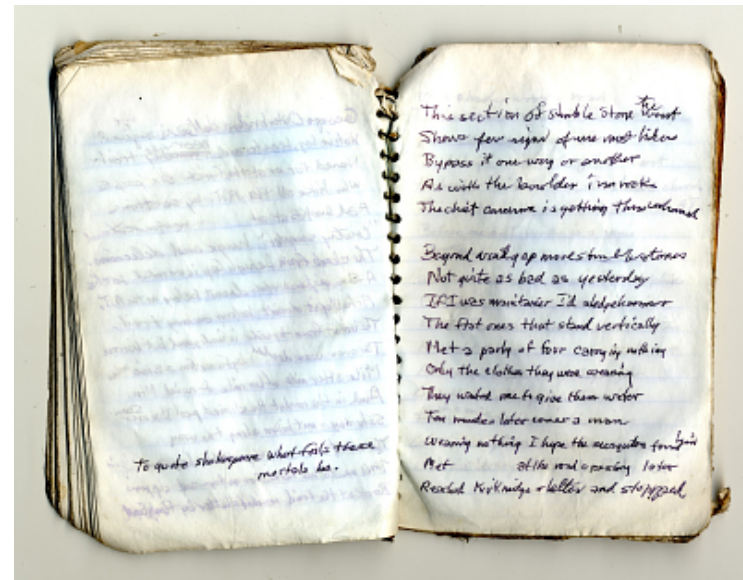


[[start of page]]  
To quote shakespeare what fools these  
mortals be.  
[[end page]]

[[start of page]]

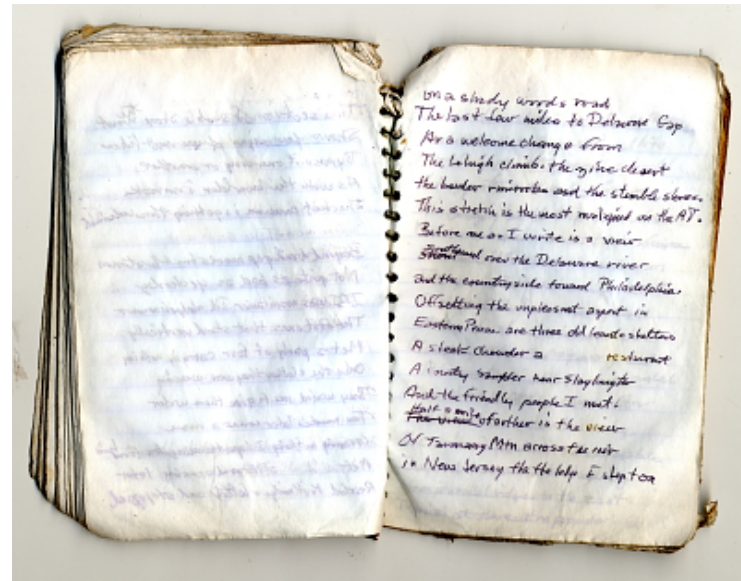
This section of stumble stone ^[[the]] worst  
Shows few signs of use most hikers  
Bypass it one way or another  
As with the boulder [[in?]] rocks  
The chief concern is getting thru unharmed

Beyond wind gap more stumblestones  
Not quite as bad as yesterday  
If I was maintainer I'd sledgehammer  
The flat ones that stand vertically  
Met a party of four carrying nothing  
Only the clothes they were wearing  
They wanted me to give them water  
Ten minutes later comes a man  
wearing nothing I hope the mosquitoes found ^[[him]]  
Met [[blank space]] at the road crossing later  
Reached Kirkridge shelter and stopped



Earl Shaffer's Appalachian Trail Hike Diary, 1998  
Transcribed and Reviewed by Digital Volunteers  
Extracted Aug-20-2014 07:42:08

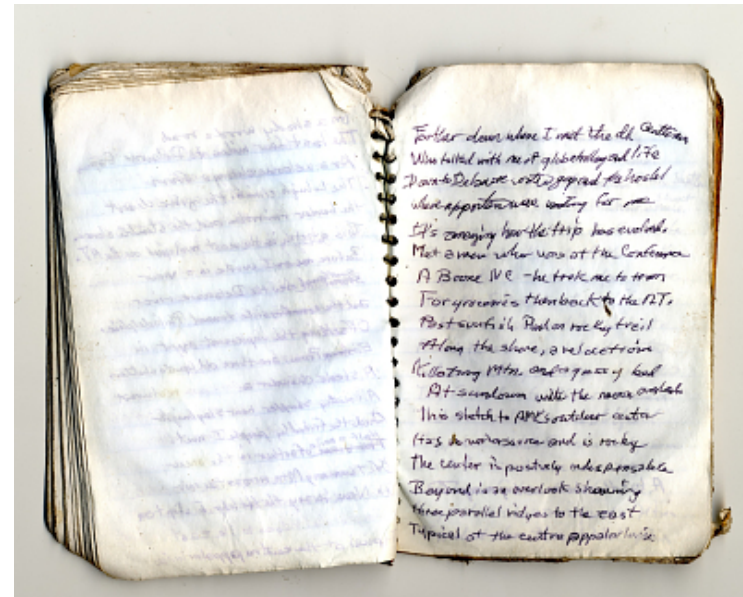
On a shady woods road  
 The last few miles to Delaware Gap  
 As a welcome change from  
 The Lehigh climb, the zinc desert  
 the boulder rimrocks and the stumble stones.  
 This stretch is the most maligned on the AT.  
 Before me as I write is a view  
~~show~~ Southward over the Delaware river  
 and the countryside toward Philadelphia.  
 Offsetting the unpleasant aspect in  
 Eastern Penn. are three old leanto shelters  
 A steak chowder a  restaurant  
 A country sampler near Slaylinigro  
 And the friendly people I met.  
 Half a mile ~~The view~~ farther is the view  
 Of Tarmany Mtn across the river  
 in New Jersey the ledge I slept on  
 [end page]



Earl Shaffer's Appalachian Trail Hike Diary, 1998  
 Transcribed and Reviewed by Digital Volunteers  
 Extracted Aug-20-2014 07:42:08

[[start page-blank page]]  
[[end page-blank page]]

[[start page]]  
Farther down where I met the old Gentlemen  
Who talked with me of globetrotting and life  
Down to Delaware water gap and the hostel  
where apperten were waiting for me  
It's amazing how the trip has evolved.  
Met a man who was at the Conference  
A Boone NC - he took me to town  
For groceries then back to the A.T.  
Past sunfish Pond on rocky trail  
Along the shore, a relocation  
Killating Mtn. and a grassy bed  
At sundown with the moon overhead  
This stretch to AMC's outdoor center  
Has no watersource and is rocky  
the center is positively indispensable  
Beyond is an overlook showing  
three parallel ridges to the east  
Typical of the centre appalachians  
[[end page]]



Earl Shaffer's Appalachian Trail Hike Diary, 1998  
Transcribed and Reviewed by Digital Volunteers  
Extracted Aug-20-2014 07:42:08

[[start of page]]

[[blank lines]]

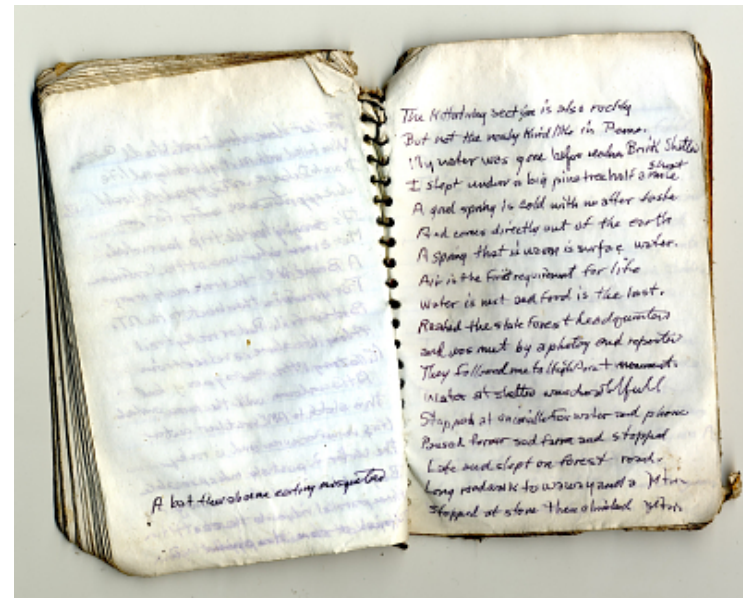
A bat flew above me eating mosquitoes

[[two blank lines]]

[[end of page]]

[[start of page]]

The Kittatiny section is also rocky  
But not the nasty kind like in Pema.  
My water was gone before [[illegible]] Brink Shelter  
I slept under a big pine tree half a short mile  
A good spring is cold with no after taste  
And comes directly out of the earth  
A spring that is warm is surfae water  
Air is the first requirement for life  
Water is next and food is the last.  
Reached the state forest headquarters  
and was meet by a photog and reporter  
They followed me to High Point monument.  
Water at shelter was Aowwfull  
Stopped at unionville for water and phone.  
Passed former sod farm and stopped  
Late and slept on forest road.  
Long roadwalk to waway and a Mtn.  
Stopped at store then climbed Mtn.



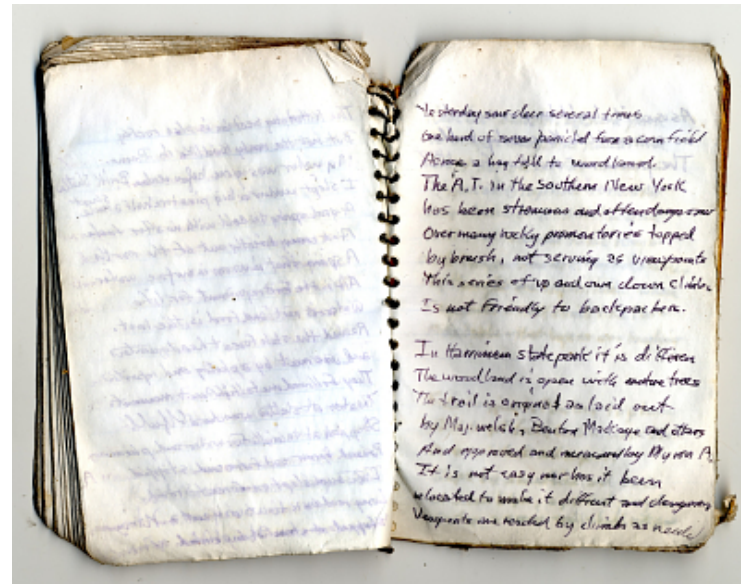
Earl Shaffer's Appalachian Trail Hike Diary, 1998  
Transcribed and Reviewed by Digital Volunteers  
Extracted Aug-20-2014 07:42:08

[[start page- blank page]] [[end page- blank page]]

[[start page]]

Yesterday saw deer several times  
One herd of seven panicked from a cornfield  
Across a hay field to woodland.  
The A.T. in the southern New York  
has been strenuous and often dangerous  
Over many rocky promontories topped  
by brush, not serving as viewpoints  
This series of up and down climbs  
Is not friendly to backpackers.

In Harriman state park it is differen  
The woodland is open with mature trees  
The trail is original as laid out  
by Maj. Welsh, Benton MacKaye and others  
And approved and measured by Myron A.  
It is not easy nor has it been  
relocated to make it difficult and dangerous  
Viewpoints are reached by climbs as needed  
[[end page]]



Earl Shaffer's Appalachian Trail Hike Diary, 1998  
Transcribed and Reviewed by Digital Volunteers  
Extracted Aug-20-2014 07:42:08

[[start of page]]

As such it should be preserved  
as a memorial to those early builders  
The pause now and then for a beat.  
Is in the...

[[blank lines]]

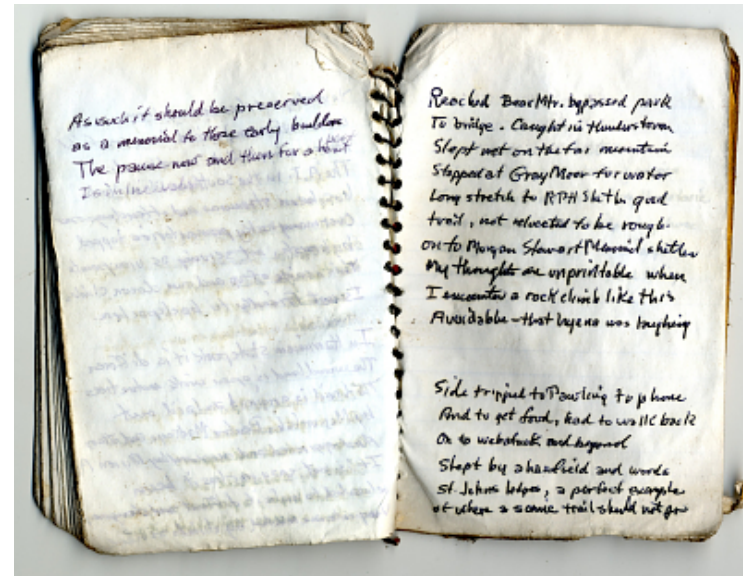
[[end of page]]

[[start of page]]

Reached Bear Mtr. bypassed park  
to bridge. Caught in thunderstorm  
Slept wet on the far mountain  
Stopped at Gray Moor for water  
Long stretch to RPG Shelter good  
trail, not relocated to be rough-  
on to Morgan Stewart Memorial shelter  
My thoughts are unprintable when  
I encounter a rock climb like this  
Avoidable--that hyena was laughing

[[two blank lines]]

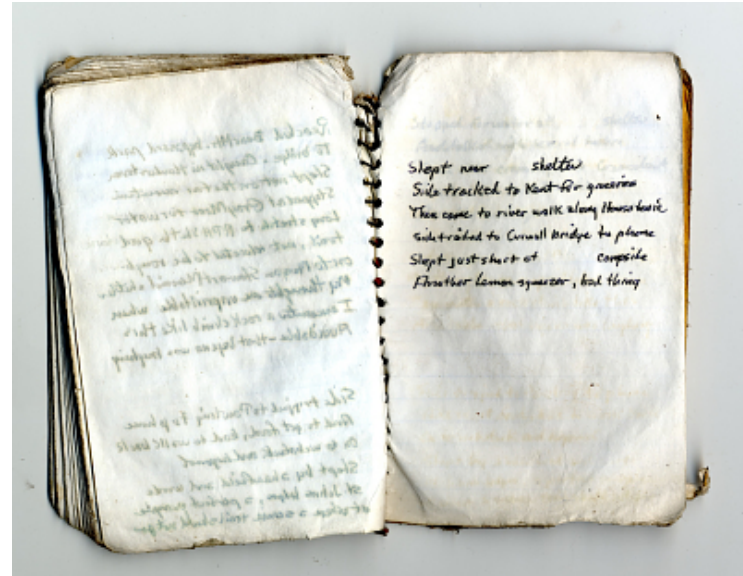
Side tripped to Pawling to phone  
And to get food, had to walk back  
On to webatuck. and beyond  
Slept by a hanfield and woods  
St. Johns ledges, a perfect example  
of where a scenic trail should not go



Earl Shaffer's Appalachian Trail Hike Diary, 1998  
Transcribed and Reviewed by Digital Volunteers  
Extracted Aug-20-2014 07:42:08

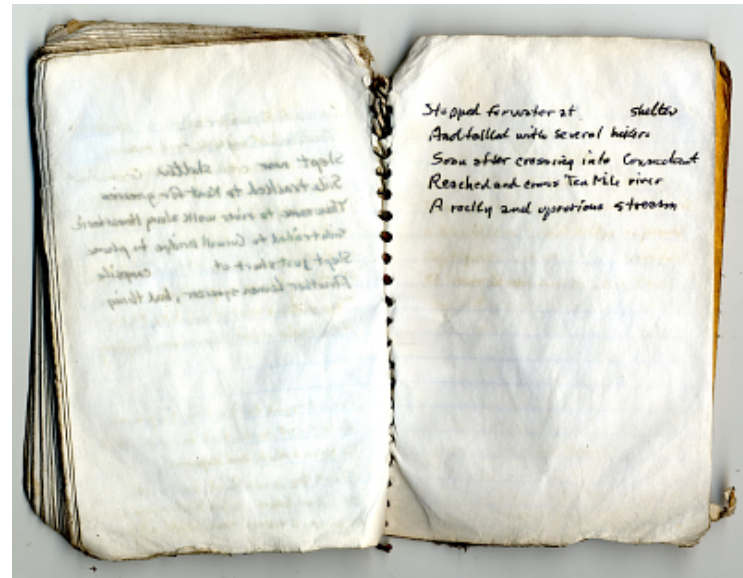
[[start page- blank page]]  
[[end page- blank page]]  
[[start page]]  
[[two lines of space]]

Slept near [[space]] shelter  
Side tracked to Kent for groceries  
Then came to river walk along Housotomie  
sidetracked to Curwall bridge to phone  
slept just short of [[space]] campsite  
Another Lemon squeezer, bad thing  
[[end page]]



Earl Shaffer's Appalachian Trail Hike Diary, 1998  
Transcribed and Reviewed by Digital Volunteers  
Extracted Aug-20-2014 07:42:08

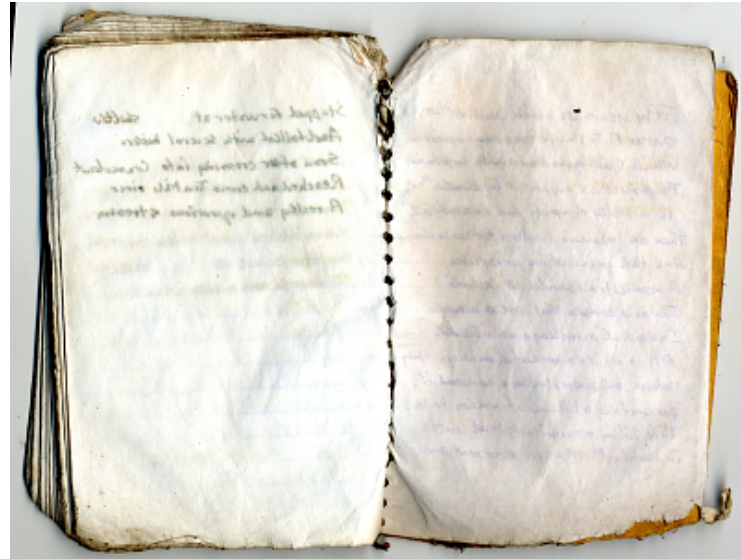
Stopped for water at [space] shelter  
And talked with several hikers  
Soon after crossing into Connecticut  
Reached and cross Ten Mile river  
A rocky and uprorious stream



Earl Shaffer's Appalachian Trail Hike Diary, 1998  
Transcribed and Reviewed by Digital Volunteers  
Extracted Aug-20-2014 07:42:08

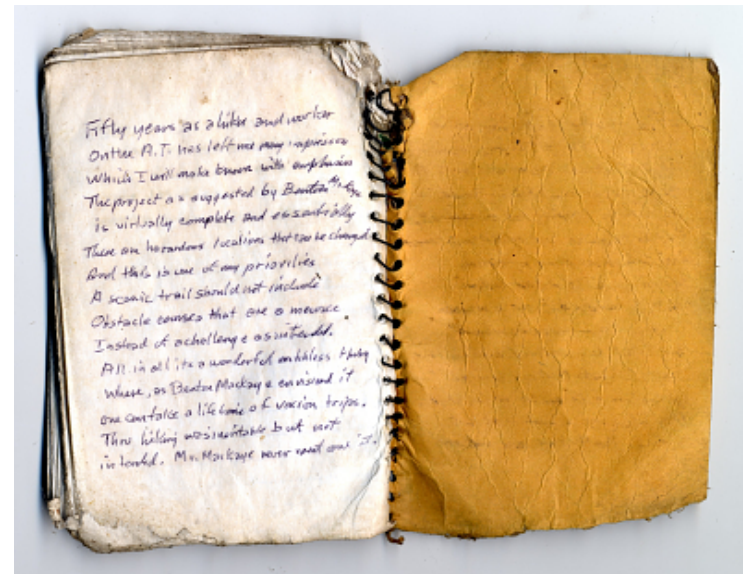


[[blank pages]]



Earl Shaffer's Appalachian Trail Hike Diary, 1998  
Transcribed and Reviewed by Digital Volunteers  
Extracted Aug-20-2014 07:42:08

Fifty years as a hiker and worker  
On the A.T. has left me many impressions  
Which I will make known with emphasis  
The project as suggested by Benton McKaye  
is virtually complete and essentially  
There are hazardous locations that can be changed  
And this is one of my priorities  
A scenic trail should not include  
Obstacle courses that are a menace  
Instead of a challenge as intended.  
All in all its a wonderful matchless thing  
where, as Benton MacKaye envisioned it  
one can take a lifetime of vacation trips.  
Thru hiking was inevitable but not  
intended. Mr. MacKaye never mentioned it.



Earl Shaffer's Appalachian Trail Hike Diary, 1998  
Transcribed and Reviewed by Digital Volunteers  
Extracted Aug-20-2014 07:42:08

[[back cover of memo book]]

[[price tag]]

[[bar code]]



Earl Shaffer's Appalachian Trail Hike Diary, 1998  
Transcribed and Reviewed by Digital Volunteers  
Extracted Aug-20-2014 07:42:08



## Smithsonian Institution

*Archives Center - NMAH*

The mission of the Smithsonian is the increase and diffusion of knowledge - shaping the future by preserving our heritage, discovering new knowledge, and sharing our resources with the world. Founded in 1846, the Smithsonian is the world's largest museum and research complex, consisting of 19 museums and galleries, the National Zoological Park, and nine research facilities. Become an active part of our mission through the Transcription Center. Together, we are discovering secrets hidden deep inside our collections that illuminate our history and our world.

Join us!

The Transcription Center: <https://transcription.si.edu>

On Facebook: <https://www.facebook.com/SmithsonianTranscriptionCenter>

On Twitter: [@TranscribeSI](https://twitter.com/TranscribeSI)

Connect with the Smithsonian

Smithsonian Institution: [www.si.edu](http://www.si.edu)

On Facebook: <https://www.facebook.com/Smithsonian>

On Twitter: [@smithsonian](https://twitter.com/smithsonian)